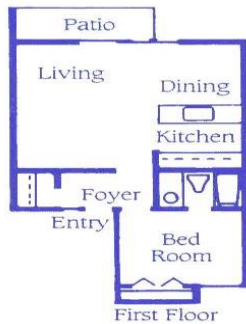


Villas by the Sea

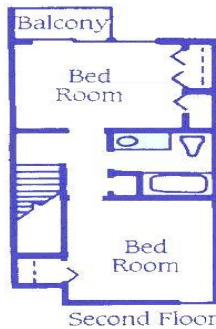
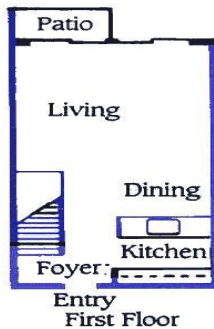
RESORT & CONFERENCE CENTER

Floor plans



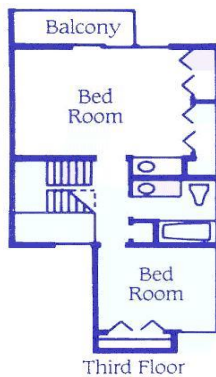
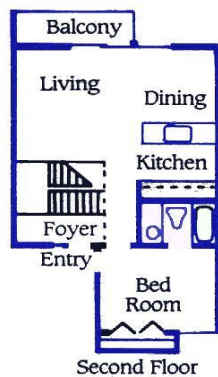
One Bedroom Villa – Cozy living / dining room combination, private patio, full kitchen, and bedroom with one queen bed & a full bath. Some feature sleeper sofas.
Ground floor – 613 sq. ft.

Islandside	Oceanside
\$135	\$145



Two Bedroom Villa – A luxury apartment with extra-large living/dining area that opens to a private patio or balcony. This room type also features a full kitchen. Master bedroom has queen bed and private balcony. Guest bedroom has two twin beds. Both bedrooms are located on the second floor. **Ground and second floor entrances – 998-sq. ft.**

Islandside	Oceanside
\$179	\$189



Three Bedroom Villa – Grand scale accommodations. Living room with balcony, dining area with table & full kitchen. Two bedrooms & full bath upstairs - Master Bedroom has king bed, vanity, and private balcony. Upstairs guest room has two twin beds. Another bedroom on the main level features a queen bed and full bath. **Second floor entrance – 1226-sq. ft.**

Islandside	Oceanside
\$219	\$229

We also feature the following room configurations:

Mini Villa – Second floor entrance. This villa is a two room suite w/ one Queen Bed in a bedroom, full bath, and sitting area with kitchenette – 480-sq. Ft.

Studio Villa – Ground floor entrance. This one room villa features one Queen Bed, a full bath, sitting area, kitchenette, & patio – 480-sq. ft.

Accessible Room – Ground floor entrance. This deluxe room features one king bed, walk-in/roll in shower, desk, coffee pot, microwave, mini fridge, & patio – 480-sq.ft.

Islandside	Oceanside
\$109	N/A